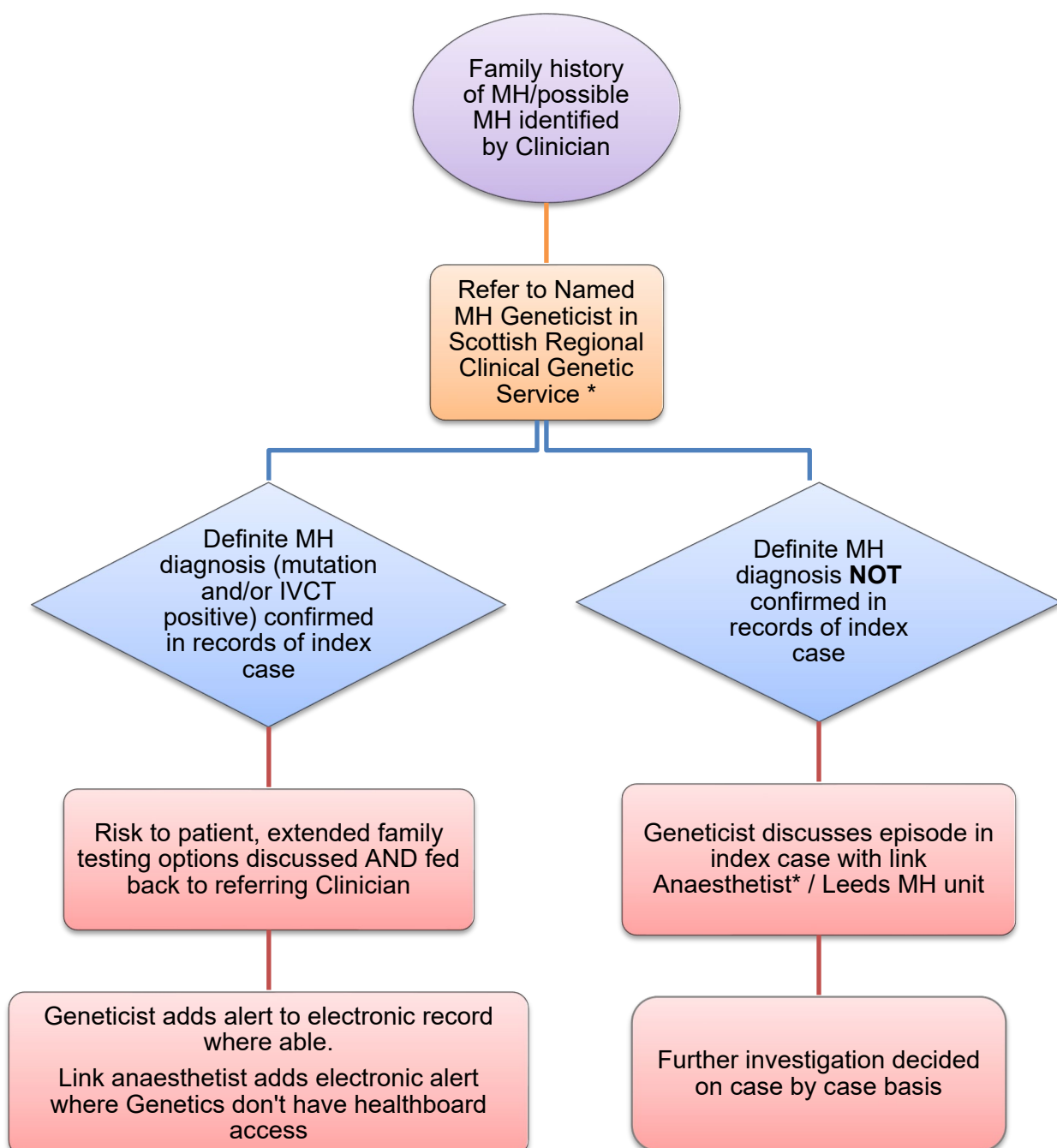


Scottish Muscle Network

Scottish Pathway for investigation of possible Malignant Hyperthermia (MH)

Pathway 2: Family History Cases



LINK ANAESTHETISTS / GENETICISTS

Adult cases

West of Scotland

Gabi Lindhoff	Golden Jubilee	Gabriele.lindhoff@gjnh.scot.nhs.uk
Rose McRobert	University Hospital Ayr	rose.mcrobert@aapct.scot.nhs.uk
Michael Money Penny	Forth Valley	michael.money penny@nhs.scot
Fiona Pearsall	QEUH & Gartnavel	Fiona.pearsall@ggc.scot.nhs.uk
Colin Pow	Crosshouse Hospital	Colin.pow@aapct.scot.nhs.uk
David Macnair	Dumfries & Galloway	david.macnair@nhs.scot
Rebecca Jadhav	Glasgow Royal Infirmary	Rebecca.jadhav@ggc.scot.nhs.uk

South East

Duncan Henderson	St John's Hospital, Livingston	Duncan.henderson2@nhslothian.scot.nhs.uk
Phillip Roddam	Western General, Edinburgh	philip.roddam@nhslothian.scot.nhs.uk
Charlotte Scott	Royal Infirmary of Edinburgh	charlotte.scott@nhslothian.scot.nhs.uk
Eva Biczó	Borders General Hospital	Eva.biczó@borders.scot.nhs.uk
Christine Kerr	Victoria Hospital, Fife	Christine.kerr2@nhs.scot

East/Tayside

Cameron Weir	Ninewells Hospital	cameron.weir@nhs.scot
--------------	--------------------	--

North – Adults

Luna Saqr	Aberdeen Royal Infirmary	Luna.saqr@nhs.scot
Emma Whyte	Raigmore Hospital	emma.whyte@nhs.scot

Scottish Muscle Network

Scottish Pathway for investigation of possible Malignant Hyperthermia (MH)

Paediatric cases

West of Scotland

Nicholas Crutchley	Forth Valley	nicholas.crutchley@nhs.scot
Anne Goldie	Royal Hospital for Children, Glasgow	Anne.goldie@ggc.scot.nhs.uk

South East

Suzanne Boyle	Royal Hospital for Children & Young People, Edinburgh	suzanne.boyle@nhslothian.scot.nhs.uk
---------------	---	--

East/Tayside

Cameron Weir	Ninewells Hospital	Cameron.weir@nhs.scot
--------------	--------------------	--

North

Kay Davies	Royal Aberdeen Children's Hospital	kay.davies@nhs.scot
Emma Whyte	Raigmore Hospital, Inverness	emma.whyte@nhs.scot

Geneticists

West of Scotland

Cheryl Longman	QEUH, Glasgow	Cheryl.longman@nhs.scot
----------------	---------------	--

South East

Elaine Fletcher	Western General, Edinburgh	Elaine.fletcher@nhslothian.scot.nhs.uk
-----------------	----------------------------	--

East/Tayside

Catherine McWilliam	Ninewells Hospital, Dundee	catherine.mcwilliam@nhs.scot
---------------------	----------------------------	--

North – Genetics

Alison Ross	Aberdeen Royal Infirmary	Alison.ross3@nhs.scot
-------------	--------------------------	--

Leeds MH Unit

Website: www.leedsth.nhs.uk/a-z-of-services/malignant-hyperthermia

Direct Line: 0113 20 65270

Fax Number: 0113 20 64140

Emergency 24 hour Hot-Line: 07947 609601