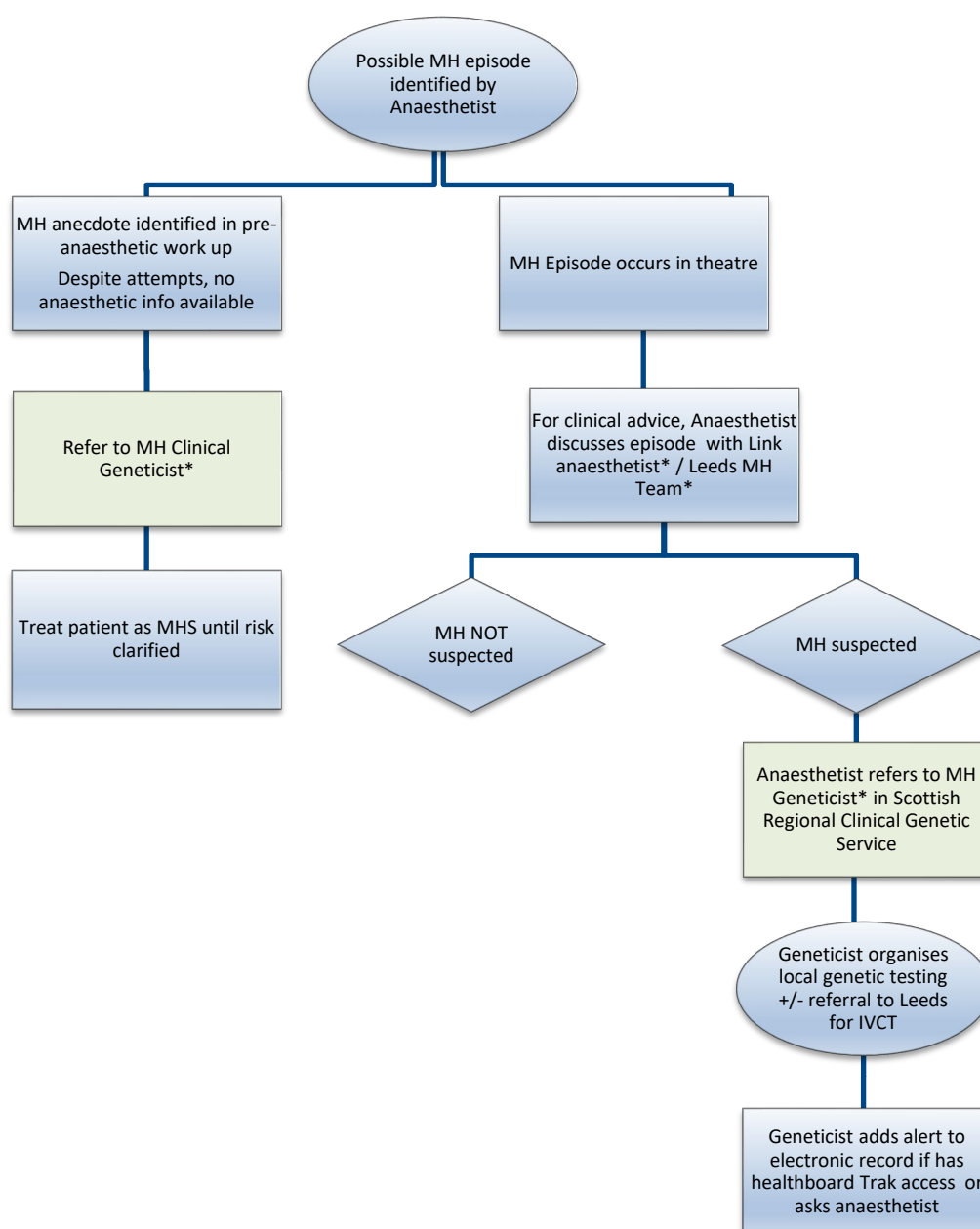


# Scottish Muscle Network

## Scottish Pathway for investigation of possible Malignant Hyperthermia (MH)

### Pathway 1: Affected MH Cases

(see Pathway 2 for Family history of MH cases)



## LINK ANAESTHETISTS / GENETICISTS

### Adult cases

#### West of Scotland

Chris Johnstone	Crosshouse Hospital	<a href="mailto:Chris.johnstone@aapct.scot.nhs.uk">Chris.johnstone@aapct.scot.nhs.uk</a>
Gabi Lindhoff	Golden Jubilee	<a href="mailto:Gabriele.lindhoff@gjnh.scot.nhs.uk">Gabriele.lindhoff@gjnh.scot.nhs.uk</a>
Rose McRobert	University Hospital Ayr	<a href="mailto:rose.mcrobert@aapct.scot.nhs.uk">rose.mcrobert@aapct.scot.nhs.uk</a>
Michael Money Penny	Forth Valley	<a href="mailto:michael.money Penny@nhs.scot">michael.money Penny@nhs.scot</a>
Fiona Pearsall	QEUH & Gartnavel	<a href="mailto:Fiona.pearsall@ggc.scot.nhs.uk">Fiona.pearsall@ggc.scot.nhs.uk</a>
Colin Pow	Crosshouse Hospital	<a href="mailto:Colin.pow@aapct.scot.nhs.uk">Colin.pow@aapct.scot.nhs.uk</a>
David Macnair	Dumfries & Galloway	<a href="mailto:david.macnair@nhs.scot">david.macnair@nhs.scot</a>
Rebecca Jadhav	Glasgow Royal Infirmary	<a href="mailto:Rebecca.jadhav@ggc.scot.nhs.uk">Rebecca.jadhav@ggc.scot.nhs.uk</a>

#### South East

Duncan Henderson	St John's Hospital, Livingston	<a href="mailto:Duncan.henderson2@nhslothian.scot.nhs.uk">Duncan.henderson2@nhslothian.scot.nhs.uk</a>
Phillip Roddam	Western General, Edinburgh	<a href="mailto:philip.roddam@nhslothian.scot.nhs.uk">philip.roddam@nhslothian.scot.nhs.uk</a>
Charlotte Scott	Royal Infirmary of Edinburgh	<a href="mailto:charlotte.scott@nhslothian.scot.nhs.uk">charlotte.scott@nhslothian.scot.nhs.uk</a>
Eva Biczó	Borders General Hospital	<a href="mailto:Eva.biczó@borders.scot.nhs.uk">Eva.biczó@borders.scot.nhs.uk</a>
Christine Kerr	Victoria Hospital, Fife	<a href="mailto:Christine.kerr2@nhs.scot">Christine.kerr2@nhs.scot</a>

#### East/Tayside

Cameron Weir	Ninewells Hospital	<a href="mailto:cameron.weir@nhs.scot">cameron.weir@nhs.scot</a>
--------------	--------------------	--

#### North – Adults

Luna Saqr	Aberdeen Royal Infirmary	<a href="mailto:Luna.saqr@nhs.scot">Luna.saqr@nhs.scot</a>
Emma Whyte	Raigmore Hospital	<a href="mailto:emma.whyte@nhs.scot">emma.whyte@nhs.scot</a>

## Scottish Muscle Network

Scottish Pathway for investigation of possible Malignant Hyperthermia (MH)

### Paediatric cases

#### West of Scotland

Nicholas Crutchley	Forth Valley	<a href="mailto:nicholas.crutchley@nhs.scot">nicholas.crutchley@nhs.scot</a>
Anne Goldie	Royal Hospital for Children, Glasgow	<a href="mailto:Anne.goldie@ggc.scot.nhs.uk">Anne.goldie@ggc.scot.nhs.uk</a>

#### South East

Suzanne Boyle	Royal Hospital for Children & Young People, Edinburgh	<a href="mailto:suzanne.boyle@nhslothian.scot.nhs.uk">suzanne.boyle@nhslothian.scot.nhs.uk</a>
---------------	---	--

#### East/Tayside

Cameron Weir	Ninewells Hospital	<a href="mailto:Cameron.weir@nhs.scot">Cameron.weir@nhs.scot</a>
--------------	--------------------	--

#### North

Kay Davies	Royal Aberdeen Children's Hospital	<a href="mailto:kay.davies@nhs.scot">kay.davies@nhs.scot</a>
Emma Whyte	Raigmore Hospital, Inverness	<a href="mailto:emma.whyte@nhs.scot">emma.whyte@nhs.scot</a>

### Geneticists

#### West of Scotland

Cheryl Longman	QEUEH, Glasgow	<a href="mailto:Cheryl.longman@nhs.scot">Cheryl.longman@nhs.scot</a>
----------------	----------------	--

#### South East

Elaine Fletcher	Western General, Edinburgh	<a href="mailto:Elaine.fletcher@nhslothian.scot.nhs.uk">Elaine.fletcher@nhslothian.scot.nhs.uk</a>
-----------------	----------------------------	--

#### East/Tayside

Catherine McWilliam	Ninewells Hospital, Dundee	<a href="mailto:catherine.mcwilliam@nhs.scot">catherine.mcwilliam@nhs.scot</a>
---------------------	----------------------------	--

#### North – Genetics

Alison Ross	Aberdeen Royal Infirmary	<a href="mailto:Alison.ross3@nhs.scot">Alison.ross3@nhs.scot</a>
-------------	--------------------------	--

### Leeds MH Unit

**Website:** [www.leedsth.nhs.uk/a-z-of-services/malignant-hyperthermia](http://www.leedsth.nhs.uk/a-z-of-services/malignant-hyperthermia)

**Direct Line:** 0113 20 65270

**Fax Number:** 0113 20 64140

**Emergency 24 hour Hot-Line:** 07947 609601